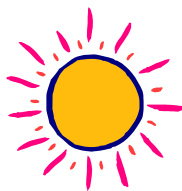


Summer 2019



SNL GRADUATE REGISTRATION BULLETIN

Updated: May 8, 2019

GRADUATE PROGRAMS:

DePaul's School for New Learning offers three graduate programs:

- ◆ Master of Arts Program in Applied Professional Studies (MAAPS) [*individualized areas of study*]
- ◆ Master of Arts Program in Educating Adults (MAEA)
- ◆ Master of Science Program in Applied Technology (MSAT)

IMPORTANT DATES & KEY INFORMATION: See <http://www.depaul.edu/university-catalog/academic-handbooks/graduate/university-information/Pages/academic-calendar.aspx>

June 14: Tuition due; after this date, due within 24 hours of registration. .

June 17: Quarter begins.

Add: Students can add a course up until the course has met for 10% of the course duration.

Drop: Students can drop a course with no penalty up until the course has met for 20% of the course duration.

Withdraw: Students can withdraw with penalty between the 20% and 70% of the course duration. After 70% instruction, students cannot withdraw.

August 11: Independent Learning Products due. (See note below.)

August 25: Quarter ends.

- ▶ **GSPRC REVIEW:** Items for review by the Graduate Student Program Review Committee (GSPRC) at their monthly meeting are to be submitted to/through one's Faculty Mentor by the *first Thursday of each month*.
- ▶ **INDEPENDENT LEARNING PRODUCTS:** To insure grade posting within the quarter, **Independent Learning Products** are due to one's Faculty Mentor (having been already assessed by prior assessors) *two weeks prior to day the quarter ends*.
- ▶ **GRADUATION STEPS & other KEY INFORMATION:** See appropriate Program Guidebook and GRADUATE STUDENT RESOURCES at: <https://snl.depaul.edu/student-resources/graduate-resources/Pages/default.aspx>

QUESTIONS?

Questions pertaining to specific programs of study should be addressed to each program's Program Guidebook, one's Graduate Faculty Mentor or the Program Coordinator. General questions should be directed to the Graduate Programs Office.

- ▶ Contact Info: <http://snl.depaul.edu/about/contact-us/Pages/graduate-contacts.aspx> or 312/362-8001

Summer QTR. (2019) at the Loop Campus (1 E. Jackson)

TO REGISTER: To learn how to register, please view this step-by-step training tutorial, link [here](#).

Maintaining Active Status: Students remain active if registered in any of the Fall, Winter or Spring quarters. If not enrolled for three consecutive regular quarters, student's active status will be discontinued. Students whose status remains active enjoy access to DePaul University computer labs and library services. Active students may request to be registered for Continuing Activity Status- a 0 credit hour registration that incurs a \$25 athletic fee. Requests will be reviewed on a case-by-case basis and must have the approval of the Faculty Mentor and the SNL Associate Dean (to request, fill out the Special Registration [form](#)). Discontinued students must apply for readmission.

SPECIAL REGISTRATIONS: If you have been advised by your mentor to request a special registration or if you wish to register for a course after the registration window has closed for students on Campus Connect, please complete a "Graduate Special Registration Form" link [here](#).

Examples of Special Registrations are:

- Graduate courses offered by the College of Business or College of Communications.
- Requests for Continuing Activity Status.
- GGIS: Graduate Guided Independent Study (SNL-532) authorized your mentor. Or, GILP: Graduate Independent Learning Pursuit (EA-533) authorized by MAEA mentors only.
- Registration for courses completed in a previous quarter or taken in a different quarter than the student's cohort group.

LIBERAL LEARNING Seminars--All Programs	Faculty	Meeting Notes	Class #
LLS 410 Agency Effectiveness	↓	↓	
<i>Using Emotional Intelligence</i>	Younger	Meets WED (5:45 pm – 9:00 pm) – all quarter	41696
LLS 420 Collaboration Effectiveness			
<i>Global Leadership</i>	Neustrom	Runs ONLINE – all quarter	41654
LLS 440 Values Effectiveness			
--	--	--	
LLS 450b Inquiry Effectiveness			
<i>Applying Systematic Inquiry</i>	Benedetto	Meets MON (5:45 pm – 9:00 pm) – all quarter	41697

***NOTE:** All MAAPS, MAEA & MSAT graduate students complete a minimum of 18 credit hours of liberal learning and are advised to diversify LL courses across FIVE domains of applied effectiveness (personal; interpersonal; organizational; values; and, inquiry. Various options per domain are offered each quarter. To consider the options above in relation to those planned for the next few quarters, see <https://snl.depaul.edu/academics/registration/Pages/Graduate-Registration-Information.aspx>

MAAPS (Core Courses)	Cluster	Faculty	Meeting Notes	Class #
AP – 501 Learning Plan Research & Development (4 cr)	---	---	---	
AP – 502 Learning Plan Review (2 cr)	104	Matamonasa	Scheduled individually	40688
AP – 528 Assessment & Integration Session 1 (0.5cr)	---	---	---	
AP – 548 Assessment & Integration Session 2 (0.5cr)	103	Matamonasa	Meets SAT: 8/24 (8:30 am – 12:30 pm)	40543
AP – 558 Assessment & Integration Session 3 (0.5cr)	102	McGury	Meets SAT: 8/24 (8:30 am – 12:30 pm)	40560
AP – 578 Assessment & Integration Session 4 (0.5cr)	---	---	---	

--Focus Area Competencies	Class #---Register by Faculty Mentor ↓	
	Matamonasa	Kisiel
AP-510* Main Theories (2cr)	40748	40753
AP-520* Methods of Research (2cr)	40755	40760
AP-530* Specialized Skills (2cr)	40762	40767
AP-540* Communication Modes (2cr)	40769	40774
AP-550* Org/ Interpersonal Dynamics (2cr)	40776	40781
AP-560* Challenges/Larger Contexts (2cr)	40783	40788
AP-570* Ethical Issues (2cr)	40790	40795
AP-574* Reflection on Practice (2cr)	40797	40802
AP-585* Supplemental Comp. I (2cr)	40804	40809
AP-586* Supplemental Comp. II (2cr)	40811	40816
AP-587* Supplemental Comp. III (2cr)	40818	40823
AP-588* Supplemental Comp. IV (2cr)	40825	40830
AP-589* Supplemental Comp. V (2cr)	40832	40837
AP-591 Integrating Proj. Proposal (2cr)	40839	40844
AP-592 Integrating Proj. Final Product (6cr)	40846	40851

***NOTE:** If fulfilling a MAAPS Competence via a DePaul course or courses/certificates outside DePaul (as approved in your Learning Plan), register for the COURSE (and pay its tuition/fee). Do not register for the competence above. Upon completion of the COURSE, your Faculty Mentor will link the COURSE to the appropriate required competence and such will appear in your Degree Progress Report/DPR.

